

# COMMISSION ON ECONOMIC COMPETITIVENESS TRENDS IN MANUFACTURING

Connecticut: Today, Tomorrow and into the Bright Future



**Scott D. Jackson**  
Commissioner

[Scott.Jackson@ct.gov](mailto:Scott.Jackson@ct.gov)

**December 1, 2017**

# Eli Whitney Workshop and Museum – Hamden, CT



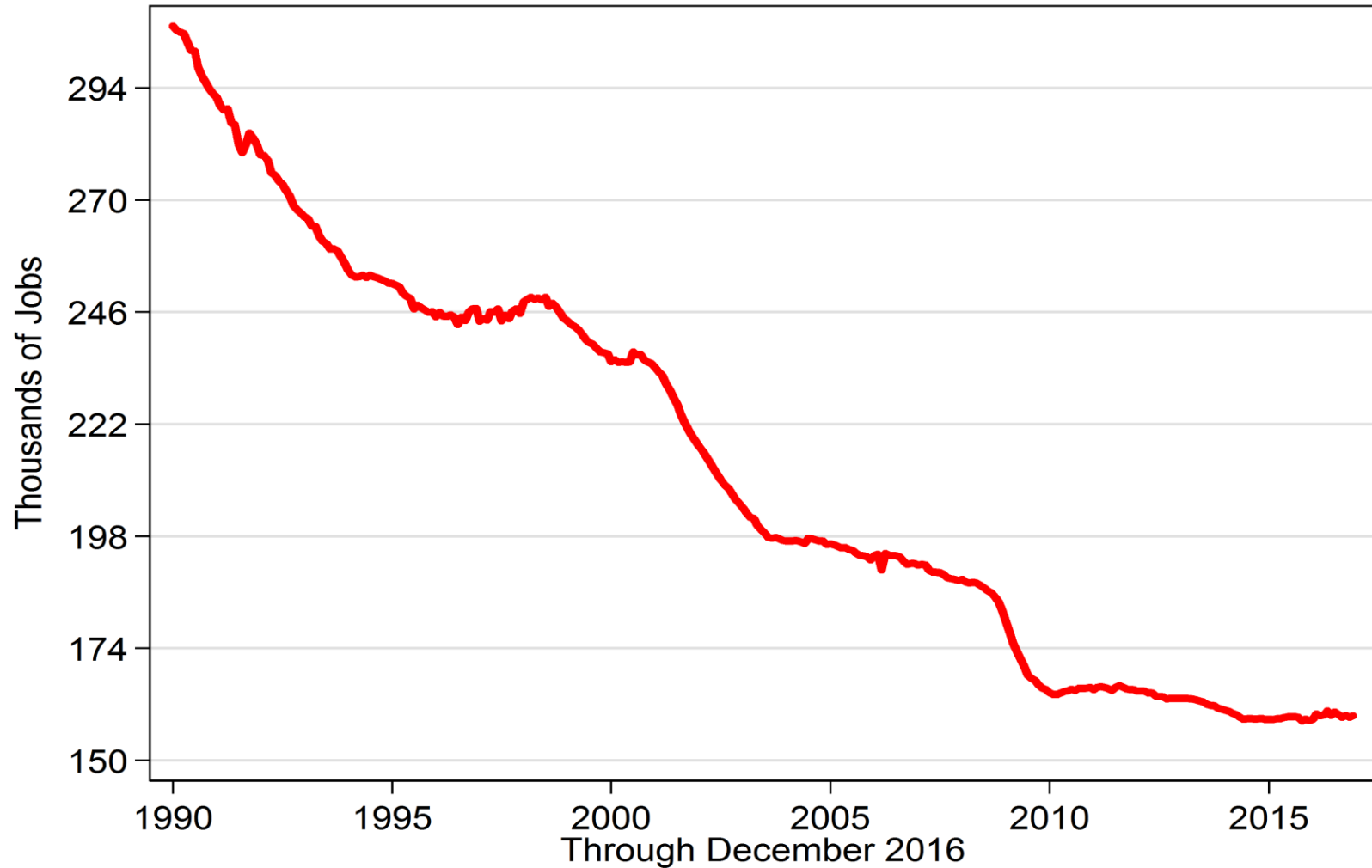
*I have not only  
Arms but a large  
proportion of  
Armourers to  
make.*

*-Eli Whitney*

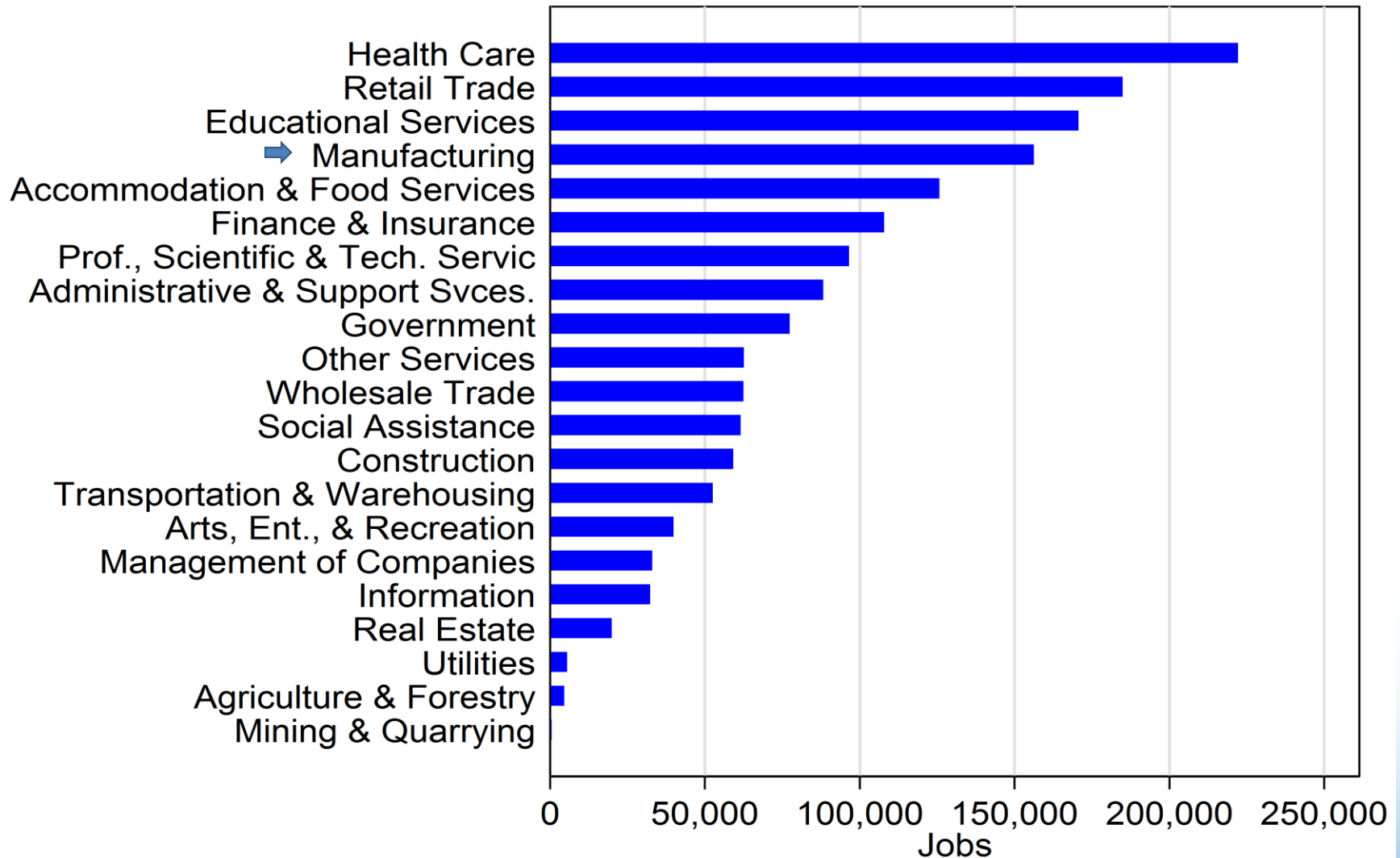


# Connecticut Employment Manufacturing Sector

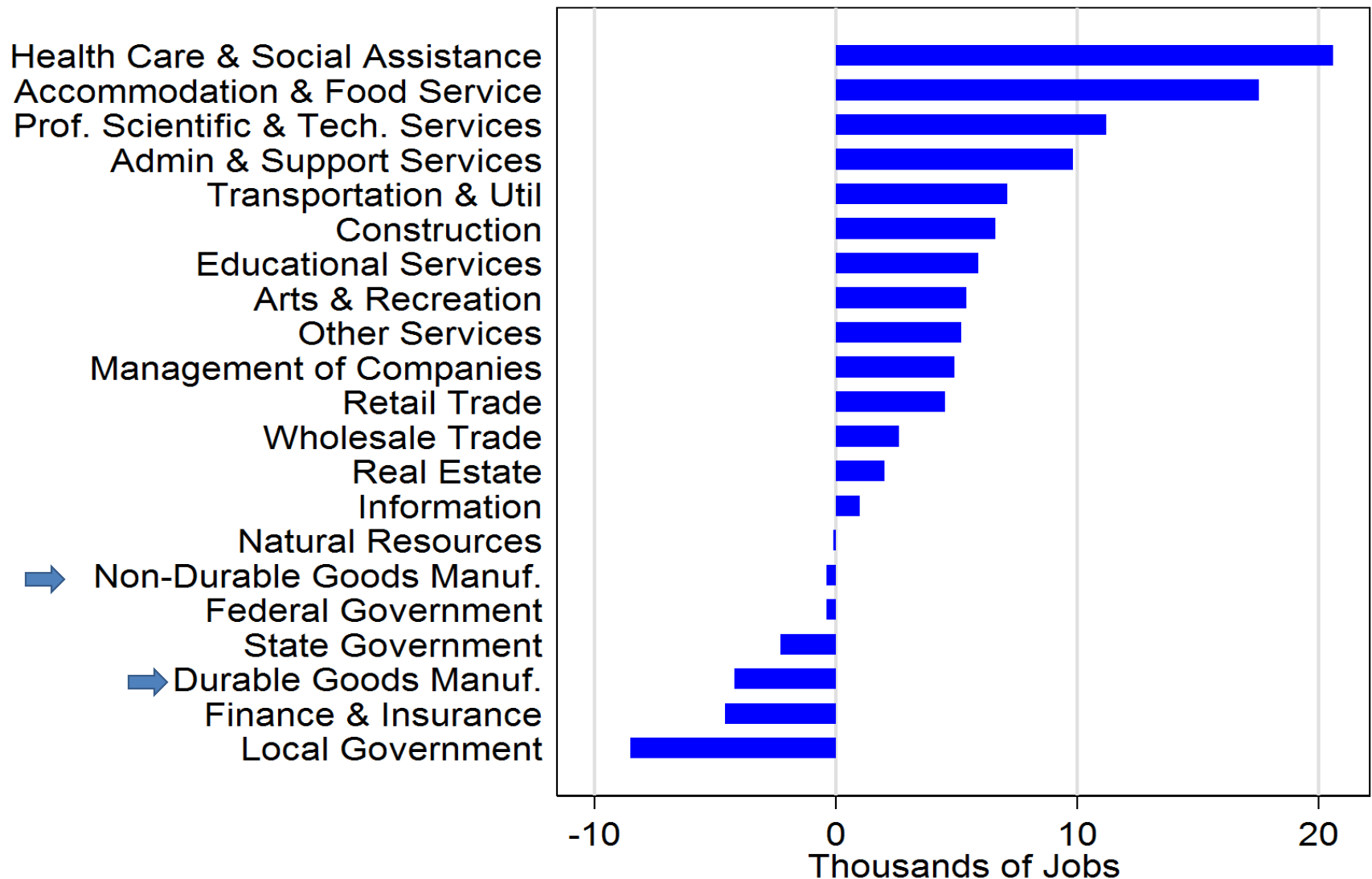
January 1990 – December 2016



# Connecticut Employment, Year Ending 2016 Q3

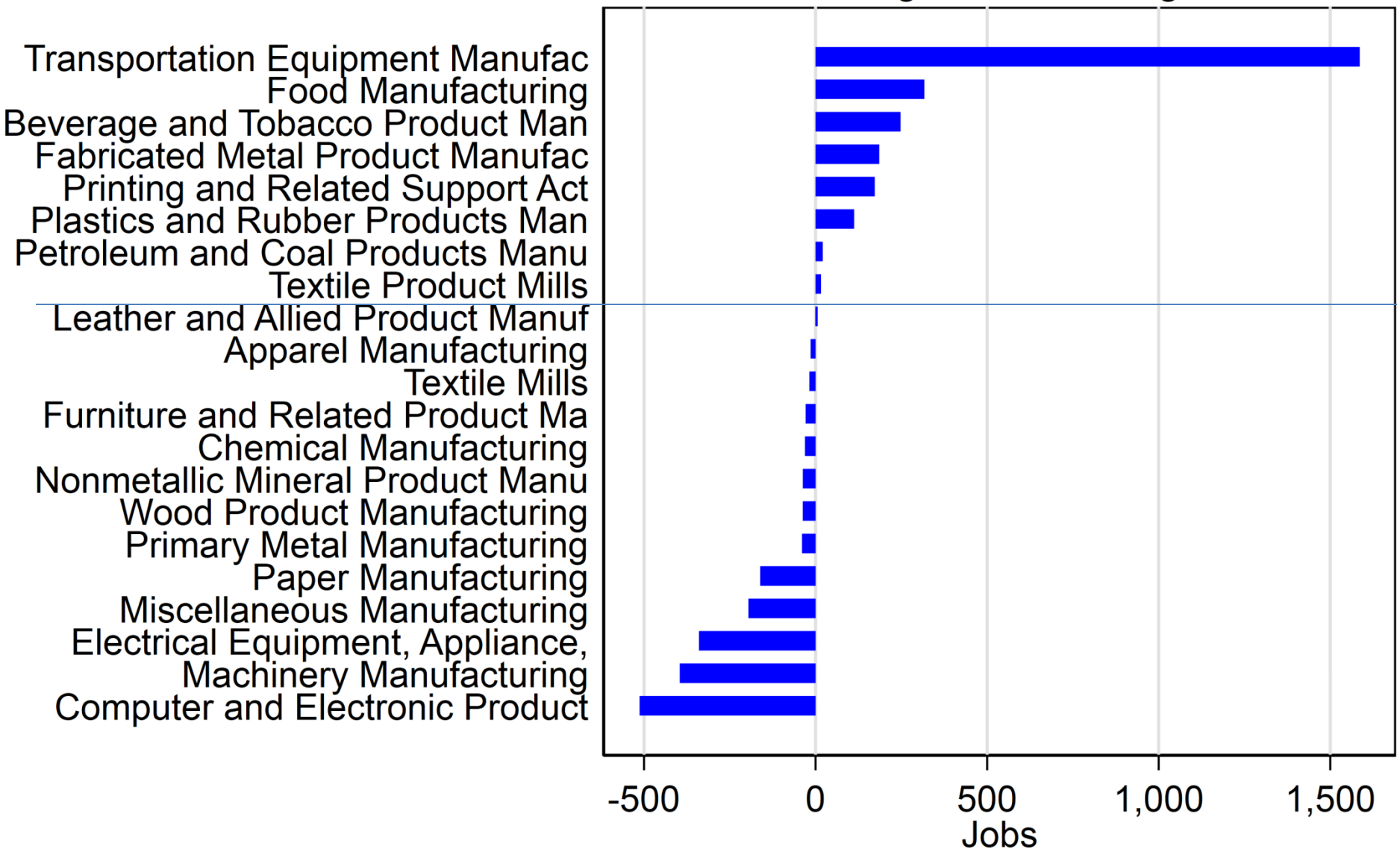


# Employment Change During Recovery: Feb 2010 – Dec 2016

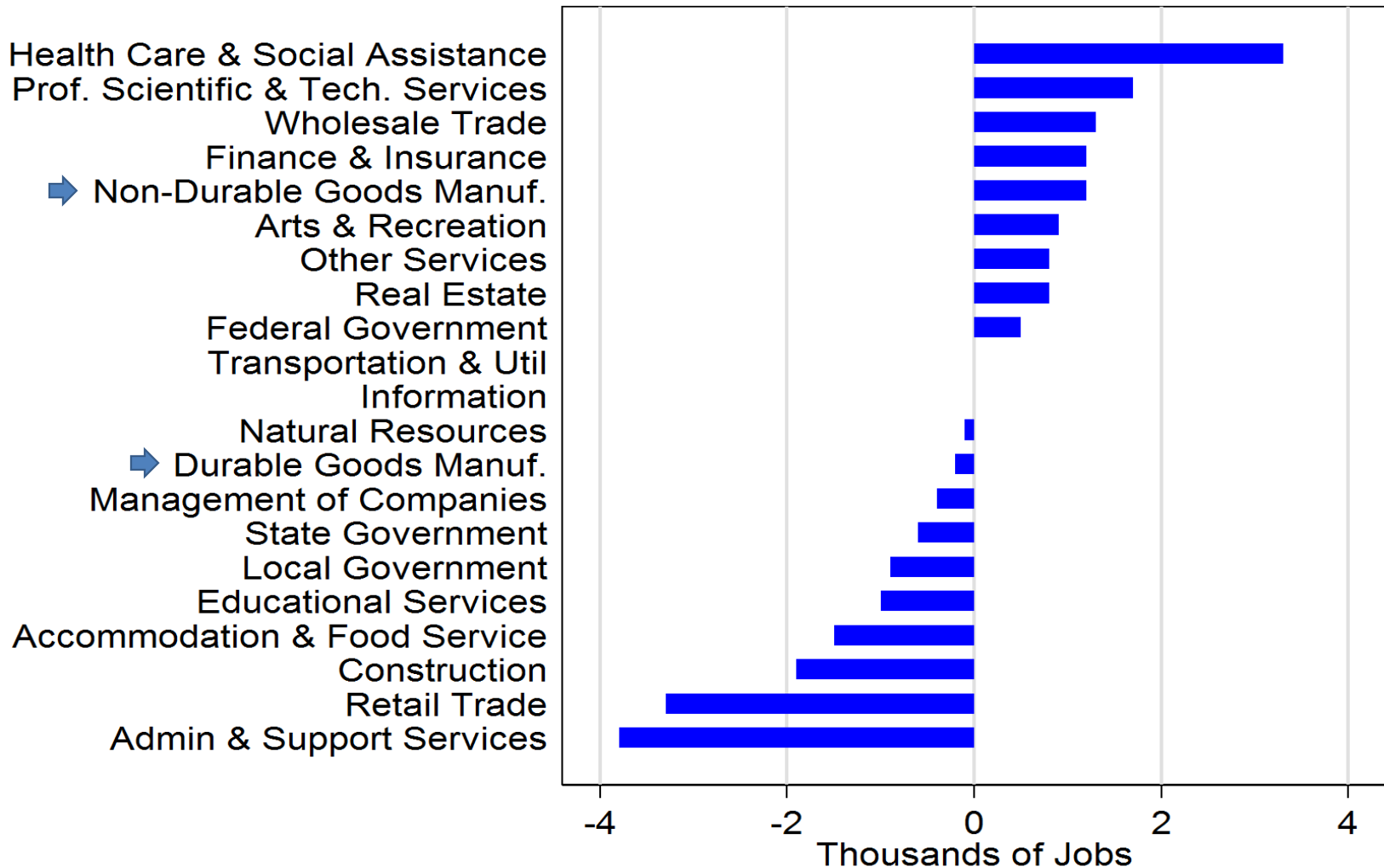


# Connecticut Employment Change

Manufacturing -- Year Ending 2017Q2

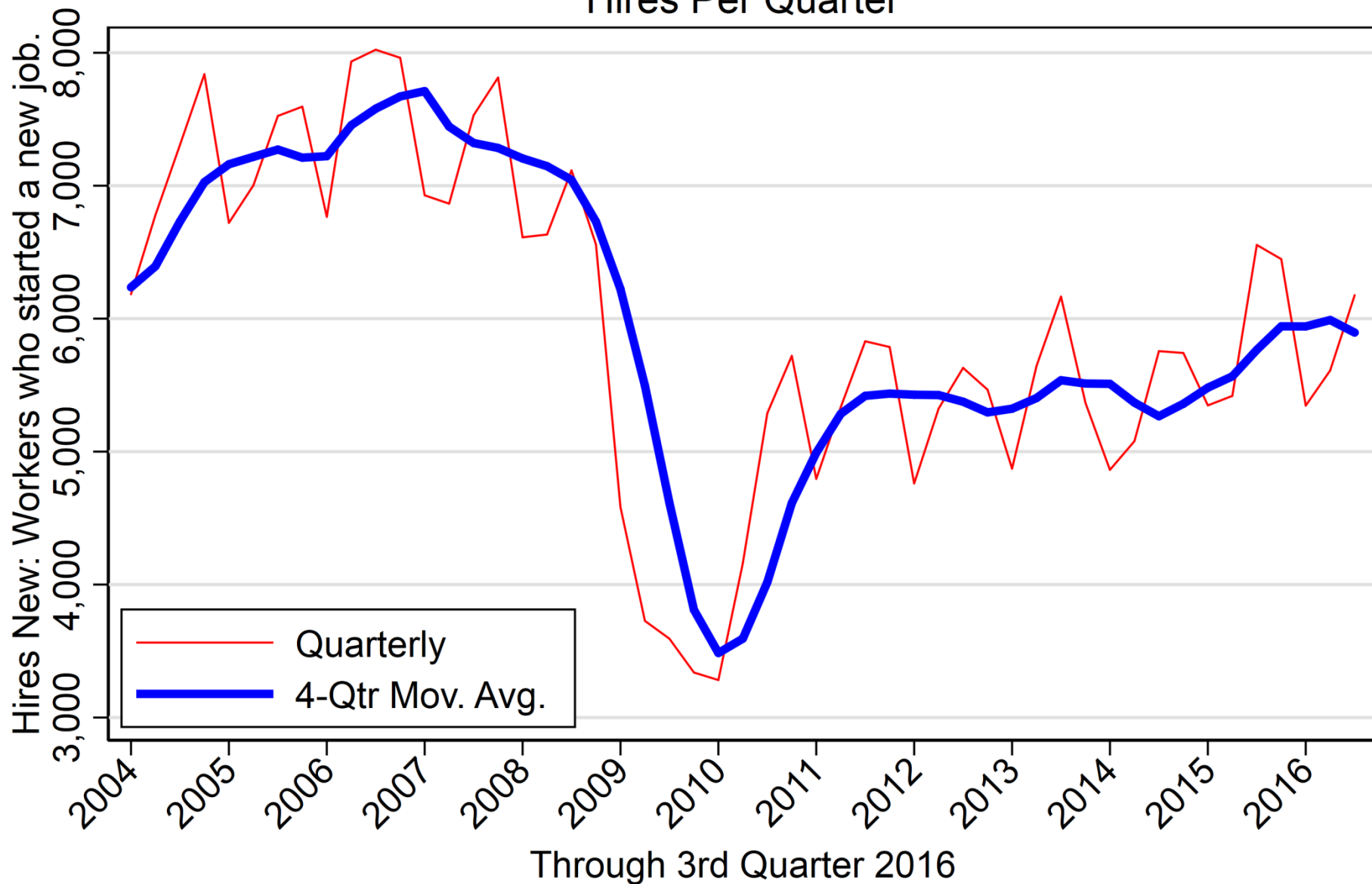


# Employment by Sector: December 2015 – December 2016



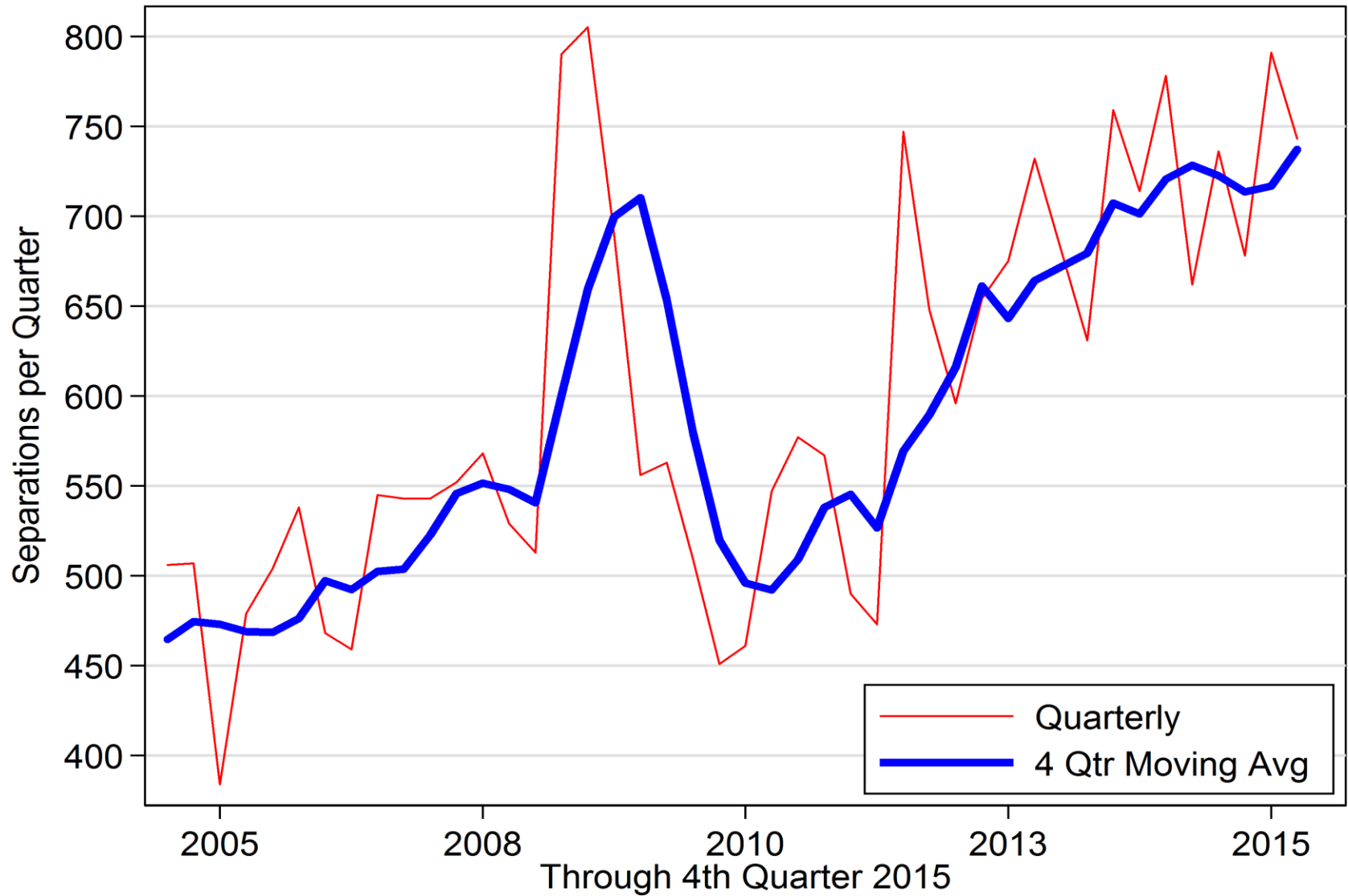
# Connecticut Manufacturing New Hires

Hires Per Quarter



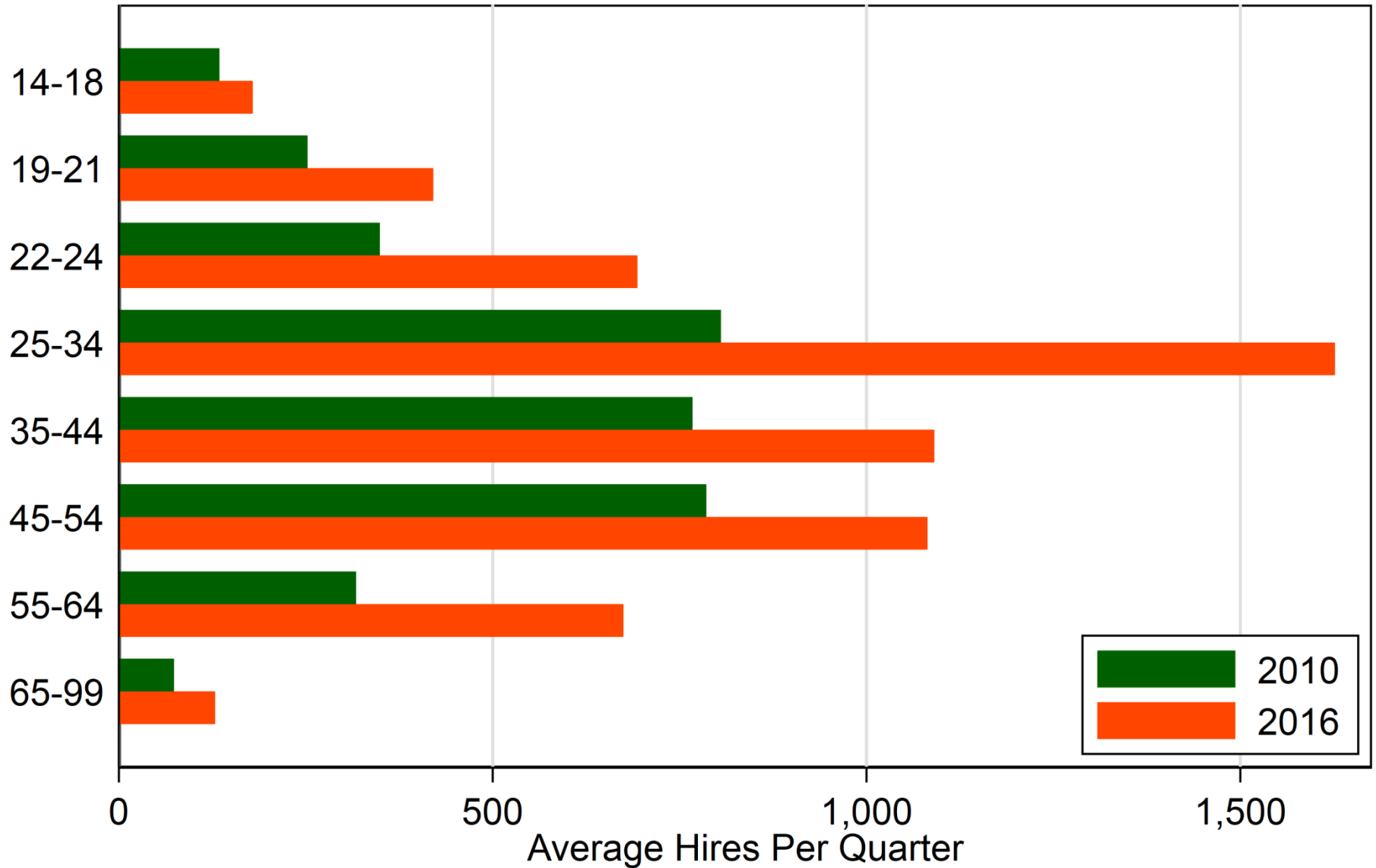


## CT Manufacturing Separations: Age 65 and Over



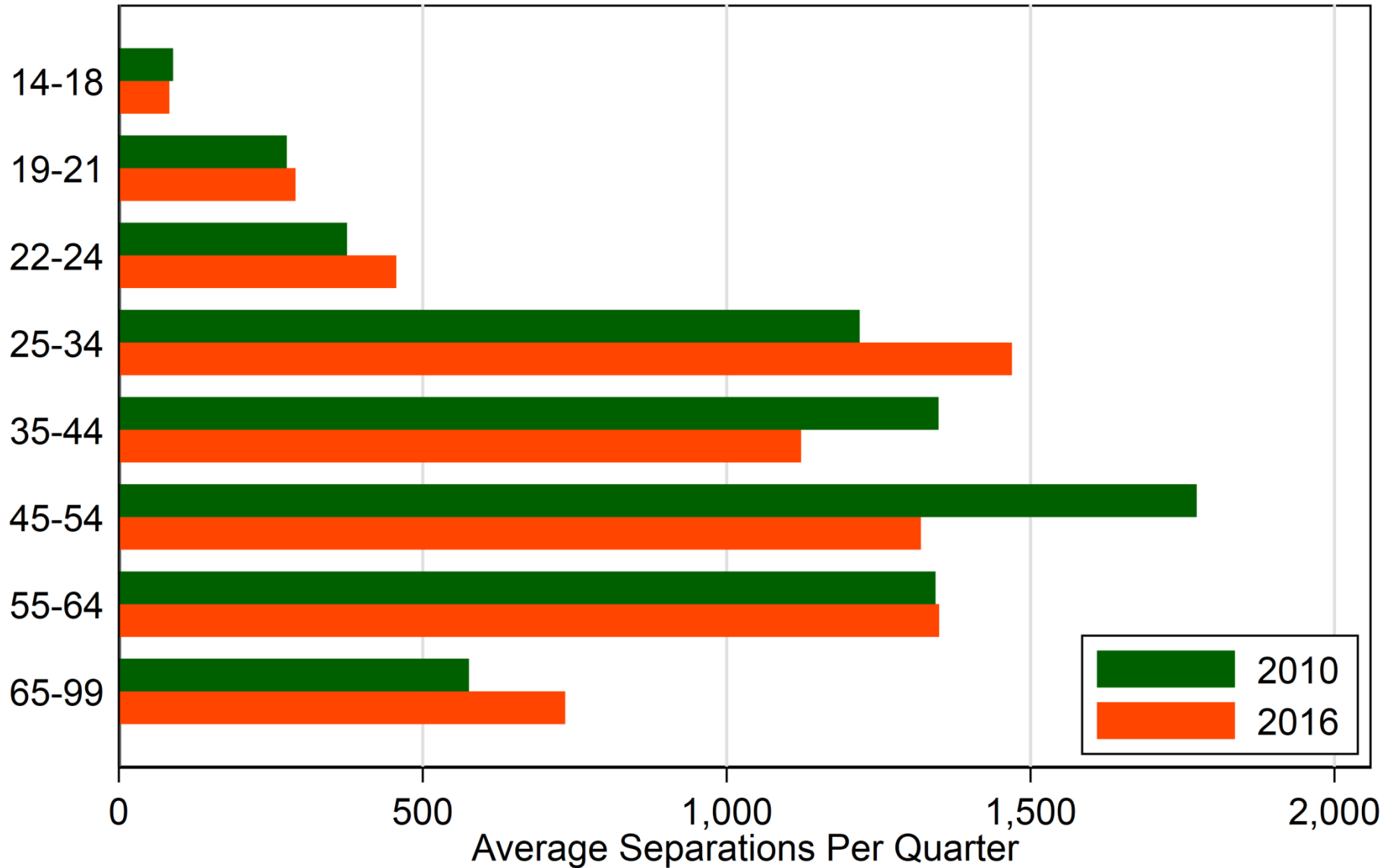
# Connecticut Manufacturing New Hires

## By Age Group

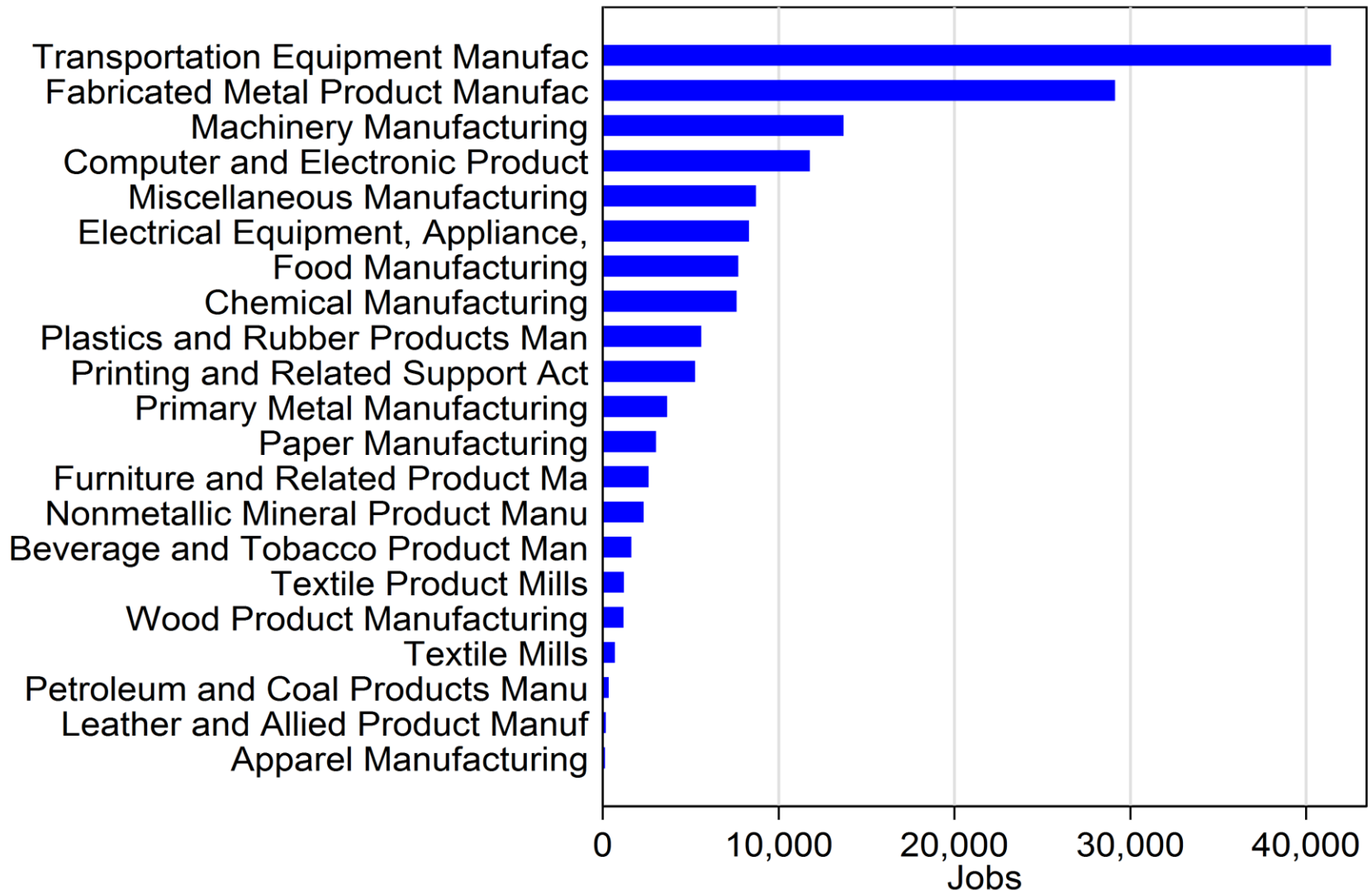


# Connecticut Manufacturing Separations

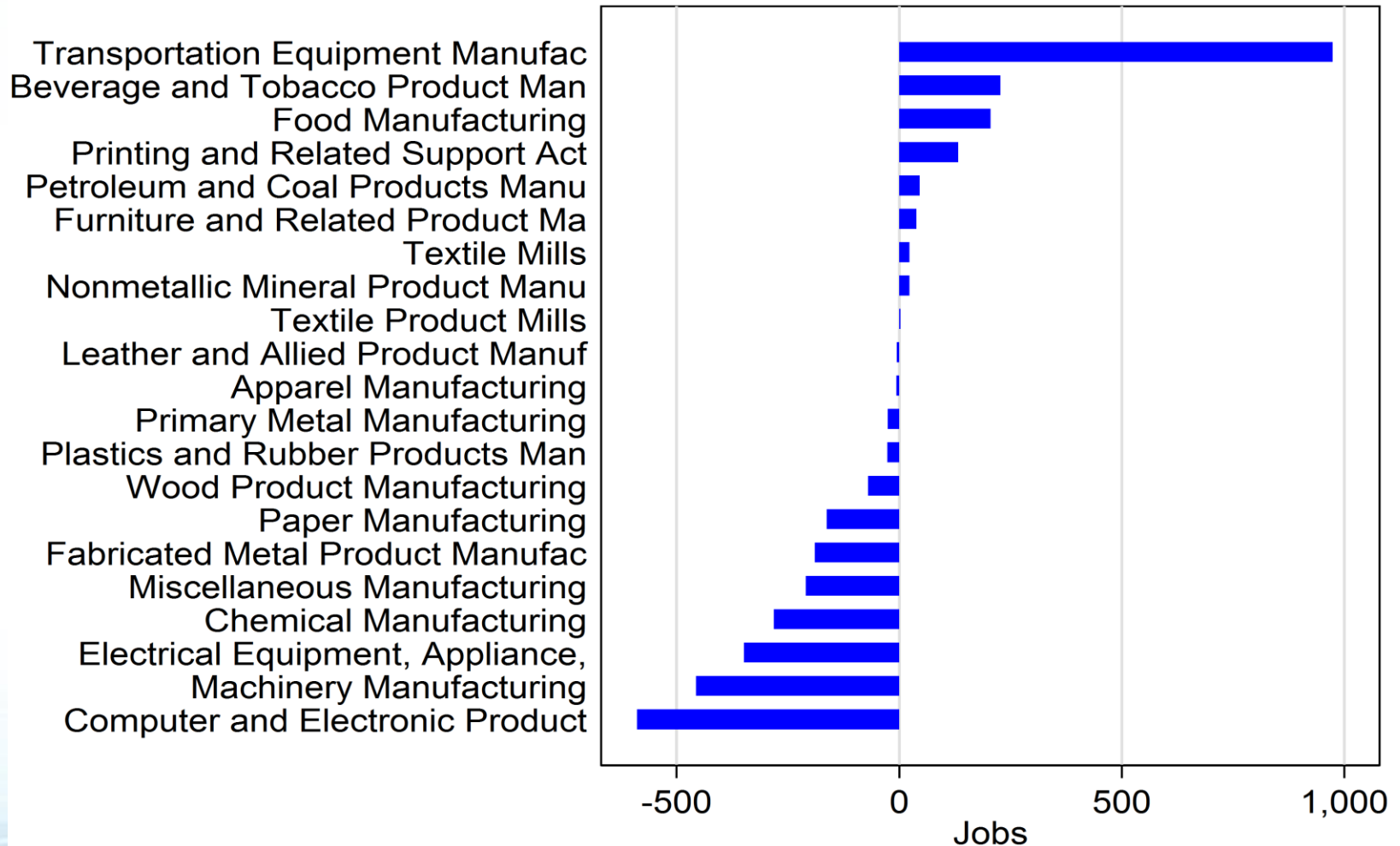
## By Age Group



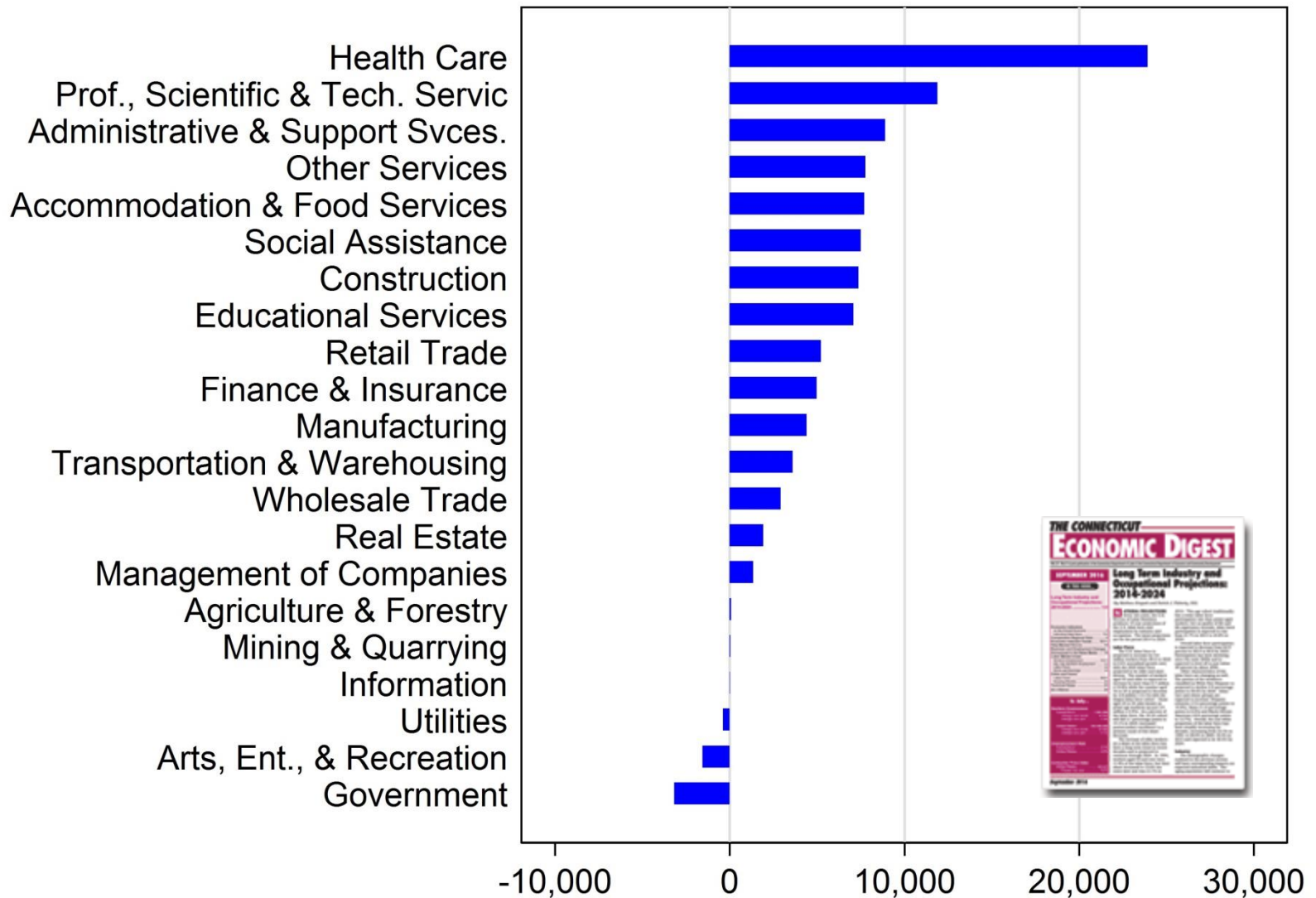
## Connecticut Manufacturing Employment – Year Ending 2016 Q3



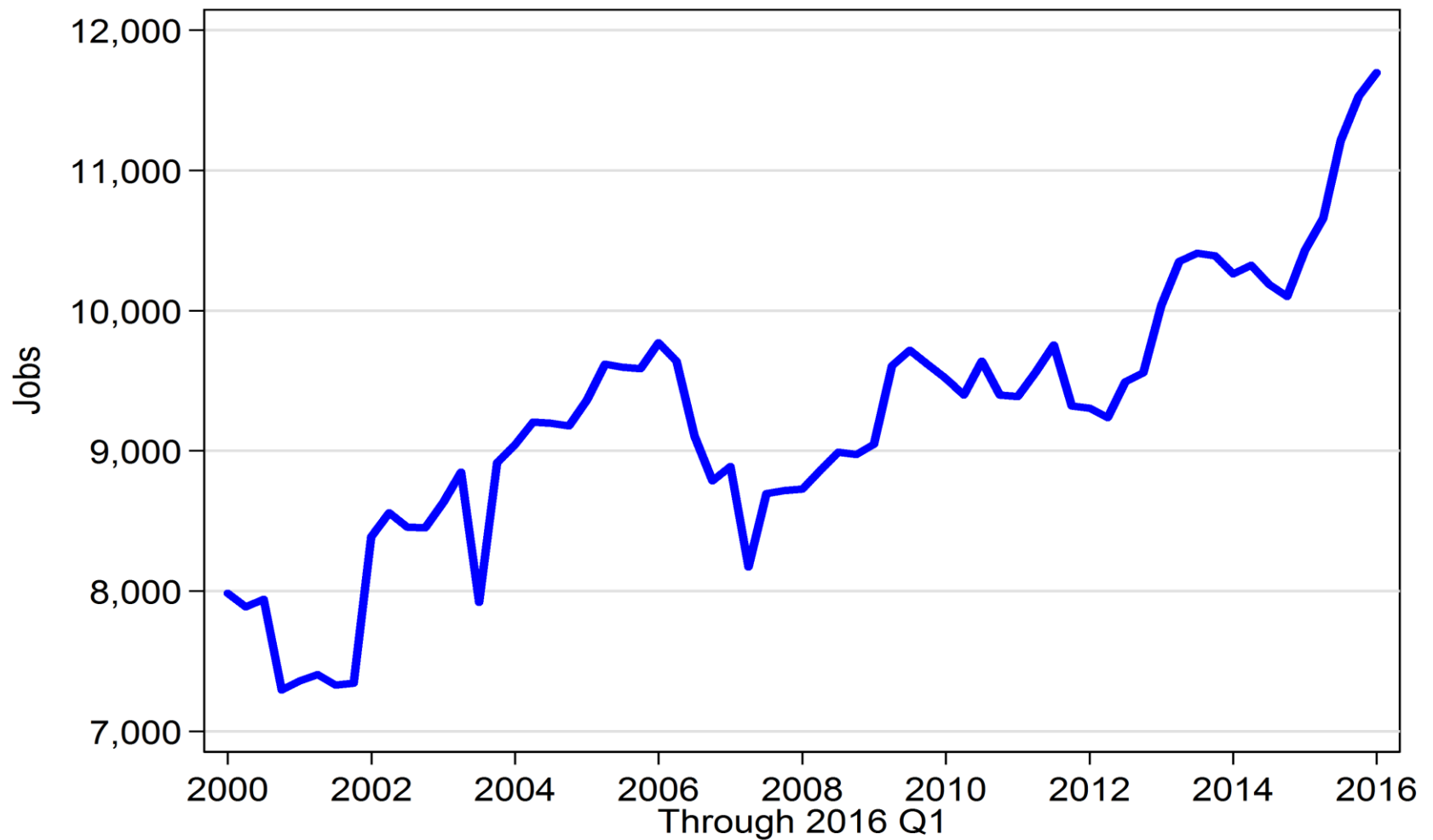
# Connecticut Manufacturing Employment Changes: Year Ending 2016 Q3



## Connecticut Employment Projections by Sector: 2014 - 2024



## Connecticut Manufacturing Employment: Shipbuilding



Source: Quarterly Workforce Indicators (QWI)

# Thank You!

Scott D. Jackson  
Commissioner, Connecticut Department of Labor  
200 Folly Brook Boulevard  
Wethersfield, CT 06109  
(860) 263-6505  
[Scott.jackson@ct.gov](mailto:Scott.jackson@ct.gov)

[www.ctdol.state.ct.us](http://www.ctdol.state.ct.us)

